

# Superboiler T4

## Portable pipe bevelling machine

- **Range:** 39 - 104 mm i/d .
- **Functions:** bevelling, facing, counterboring.
- **Materials:** any kind of steel.
- **Power:** pneumatic/electric.
- **Note:** an extremely powerful machine designed to handle all the tough heavy wall tubes. Due to its power is commonly used for seal weld removal on boiler re-tube jobs



### SUPERBOILER T4 AUTOLOCK

Auto locking device available for repetitive work.

### SUPERBOILER T4 E

110V & 230V

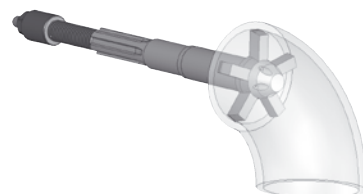
# Superboiler T4

## TECHNICAL FEATURES

### SB T4 SB T4 E

Locking range	mm Ø i/d.)	39-104	39-104
Idle speed	Rpm	70	70
Torque	Nm	180	245
Feeding stroke	mm	40	40
Pneumatic motor power	Hp (W)	1,33 (1020)	-
Air consumption	cfm	55-60	-
Air pressure	psi	90	-
Air hose connection	inches	3/4"	-
Electric motor power	Watt	-	1020
Voltage	Volt	-	110/220
Frequency (cycles)	Hz	-	50
Max noise level	dB	75	75
Unit weight	Kg	17,0	18,0

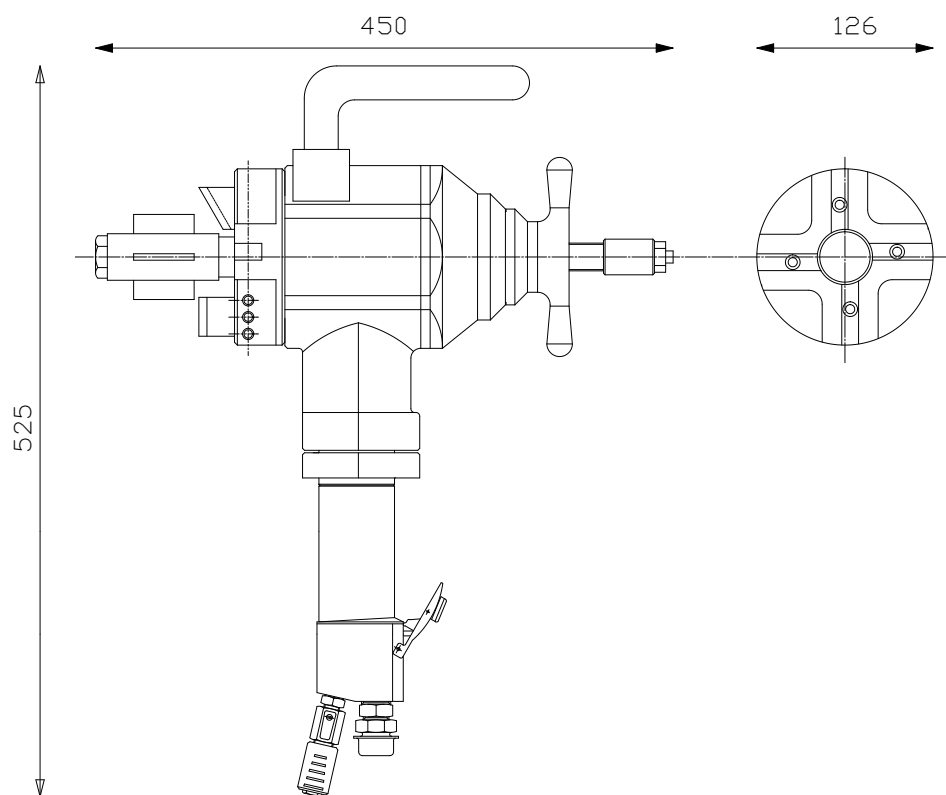
## OPTIONAL



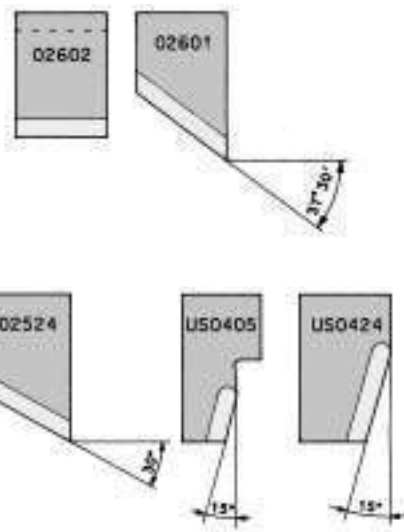
### ELBOW LOCKING SHAFTS

AVAILABLE COVER A RANGE FROM  
46 TO 103 mm/Ø.

Albero Shaft	Locking range (i/d.) mm	inches
45 Ø	46 - 103	1.81 - 4.06



## EXAMPLES OF CUTTER BITS



All units are supplied complete with all gripping segments to cover the full range of the machine. Service tools, drawings, instruction manual and warranty certificate are also supplied as standard. Each machine is supplied with a protective carrying case. We strongly recommend the use of the GBC portable filter lubricator with all our pneumatic models.