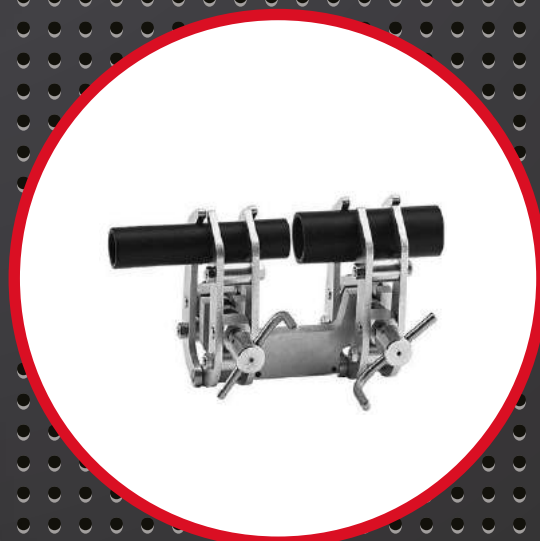




## PIPE ALIGNMENT CLAMPS

- Pipe Beveling Machines
- Pipe Cutting Machines
- Grinding Machines
- Custom Built Machines
- Pipe Stands and Clamps
- Pipe Purging
- Plate Bevellers
- Heat Exchanger, Boiler & Bundle



Sales • Service • Hire



# Introduction



**GBC Industrial Tools Ltd are the 'pipe equipment specialists' for the supply of pipework equipment and tools.**

Over the past 30 years our parent company GBC Industrial Tools Spa, has established itself as one of the worlds leading manufacturers of portable pipework machinery, due to its consistent high level of quality, both in product and service. We are pleased to be part of that team.



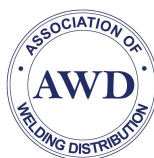
GBC has established an extensive distribution network to industries across the world.

## These industries include:

- Petrochemical
- Offshore
- Power Generation
- Heat Exchange Manufacture/ Repair
- Boiler Industry
- Ship Building and Repair
- Nuclear
- General Fabrication
- Site Services



GBC Industrial Tools offer a comprehensive range of on-site machining services, please check with our office for your specific requirements.



Registered address: 7 Drakes Drive, Crendon Business Park Long Crendon, HP18 9FE  
Registered in England & Wales. Registration no. 08966210 • VAT No. 190019919

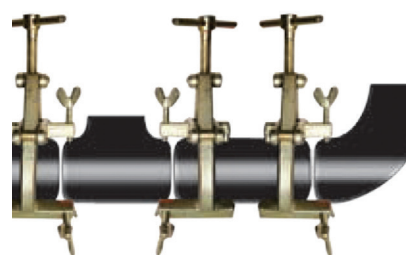
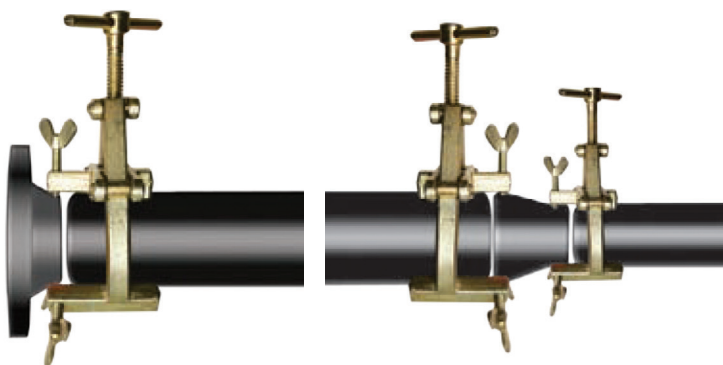
# Gold Bridge Clamps

## Pipe welding clamp 1-14" o/d

- Quick and easy to use
- Combines accuracy with safety
- Instant centering
- A quality product at low cost
- Forged steel construction for maximum strength
- Wing bolts with stainless steel bearings

## OPTIONAL ACCESSORIES

Stainless Steel Covers can be fitted quickly to the clamps. This makes the contact points of the clamp stainless, thus eliminating contamination of the pipe.



## STAINLESS STEEL COVERS

Part No.	Pipe Diameter Imperial	Pipe Diameter Metric	Weight KG/LBS
GBC3	1"-3"	20-90 mm	1.4 / 3
GBC5	2"-5"	50-150 mm	3 / 7
GBC7	4"-7"	90-190 mm	3.3 / 7.5
GBC9	5"-9"	125-225 mm	7 / 15.5
GBC14	10"-14"	225-370 mm	9 / 20

Part No.	Pipe Clamp Size
GBC3SSK	1"-3"
GBC5SSK	2"-5"
GBC7SSK	4"-7"
GBC9SSK	5"-9"
GBC14SSK	10"-14"

GBC Clamps must not be used as a lifting device.  
Fittings must be independently supported at all times.



# Black Bridge Clamps

## Pipe alignment clamps 1" - 12"

- Quick and easy to use
- Combines accuracy with safety
- Instant centering
- A quality product at low cost
- Stainless steel clamping feet & wing bolt bearings



Black Bridge Clamps can be used for the welding of all kinds of materials.

Adjusting screws have stainless steel bearings, thus reducing the risk of carbon contamination and corrosion.

The welding of pipe to pipe and pipe to fittings is easily performed with BB Clamps.

Part No.	Pipe Diameter Imperial	Pipe Diameter Metric	Weight KG/LBS
BBC2	1"-2"	25-65 mm	1.5 / 3.50
BBC6	2"-6"	50-168 mm	3.75 / 8.0
BBC12	5"-12"	127-325 mm	7.50 / 15.0

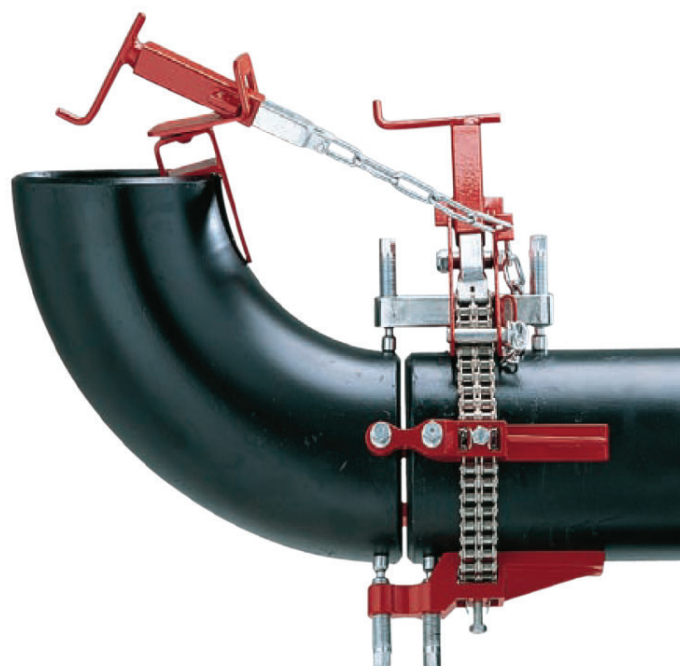
GBC Clamps must not be used as a lifting device.  
Fittings must be independently supported at all times.

# Single Chain Clamps

## Double Jackscrew clamps for aligning & reforming pipes

### All clamps include:

- Length of chain required for the pipe range
- Double jackscrew jackbars listed for the pipe range
- Main block
- Fine adjustment
- Fitting alignment device
- Jackscrew wrench
- Parts and operating manual
- Metal Storage box
- Hi-Lo gauge



### Features and advantages:

- Alignment - can align all pipe schedules accurately.
- Reforming - jackscrews enable the elimination of 'Hi-Lo' points either side of the weld joint. Can reform up to schedule 40 pipes.
- Adaptable - one chain clamp covers the range of 8 cage clamps.
- No Tack Jackbars - joints can be fully welded without removing the clamp.
- Versatile - elbows, tees and other fittings can be accurately aligned using the Fitting Alignment Device.
- Quality - jackbars are cast from high quality steel alloys.
- Additional jackbars can be added if extra pressure is required.
- Jackscrews - Jackbars have two jackscrews with independently pivoting pads to compensate for uneven surfaces.
- Stainless Steel - available in both carbon and stainless steel versions.

Part No.	Pipe Diameter Range " /mm	No. Of Jackbars	Reforms Pipe to Schedule	Aligns Pipe to Schedule	Shipping WT KGS
SCC12	1-12 / 25.4 - 304.8	4	40	80	12
SCC12SS	1-12 / 25.4 - 304.8	4	40	80	12
SCC20	4-20 / 101.6 - 508	7	40	80	17
SCC20SS	4-20 / 101.6 - 508	7	40	80	17
SCC36	10-36 / 254 - 914.4	8	40	80	42
SCC36SS	10-36 / 254 - 914.4	8	40	80	42
SCC54	10-54 / 254 - 1371.6	13	40	80	82
SCC54SS	10-54 / 254 - 1371.6	13	40	80	82

GBC Chain Clamps must not be used as a lifting device.  
Fittings must be independently supported at all times.

# Double Chain Clamps

## Ultra heavy duty double chain reforming alignment clamp

### Features and advantages:

- **Precision Alignment** – The double jackbars, spaced around the outside diameter of the pipe, provide accurate alignment and reforming of the internal or external diameters of both pipes within 0.5mm.
- **Extremely Tough** – Reforms pipes on both sides of the weld joint to Sch80, and elbows, tees and other fittings.
- **Adaptable** – The Chain Clamp can be used to support, align, and reform elbow, tees and other fittings that a cage clamp cannot cope with. One Chain Clamp covers the range of eight (8) cage clamps.
- **Extra Heavy Duty Independent Jackbars** – Enable the operator to form the pipe to the required shape. Each Jackscrew has independently pivoting feet to cope with uneven surfaces.
- **Versatile** – Elbows, tees and other fittings can be aligned with the Fitting Alignment Device.



### Double Chain Clamp includes:

- Length of chain required for the pipe range
- Extra heavy-duty jackbars listed for the pipe range
- Number of Main blocks listed for the pipe range
- Two (2) fine adjustments
- Fitting alignment device  
(larger clamps supplied with come-a-long)

- Jackscrew wrench
- Operating instructions
- Hi-Lo gauge

### Optional:

- Torque wrench
- Carbon or stainless steel spacing screws (optional)
- Additional jackbar

Part No.	Pipe Diameter Range "/>mm	No. Of Jackbars	Number of Main Blocks	Shipping WT KGS
DCC36	10-36 / 254-914	9	1	100 / 220
DCC36SS	10-36 / 254-914	9	1	100 / 220
DCC48	10-48 / 254-1219	12	1	126 / 278
DCC48SS	10-48 / 254-1219	12	1	126 / 278
DCC54	10-54 / 254-1372	14	1	136 / 300
DCC54SS	10-54 / 254-1372	14	1	136 / 300
DCC60	10-60 / 254-1524	16	1	149 / 328
DCC60SS	10-60 / 254-1524	16	1	149 / 328
DCC72	10-72 / 254-1829	20	1	176 / 387
DCC72SS	10-72 / 254-1829	20	1	176 / 387

Double chain clamps must not be used as a lifting device.

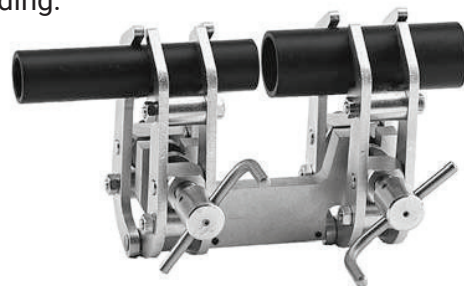
When using the Fitting Alignment Device fittings must be independently supported.

# Pincer and Internal Alignment Clamps

## Pincer Clamp

For quick and accurate alignment of pipes of equal or differing diameters on a common centre line. Automatic diameter compensation. All parts stay easily accessible for welding.

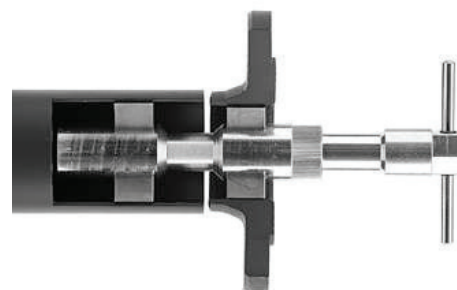
Part No.	Clamping Range (mm)	Weight KG/LBS
PC70	10-70	2.1 / 5
PC140	40-140	5.9 / 135
PC330	75-330	26 / 57.5



## Mini Clamp

For quick and accurate alignment and clamping of flanges, nozzles, etc to pipes and cylindrical tanks. Available in stainless steel.

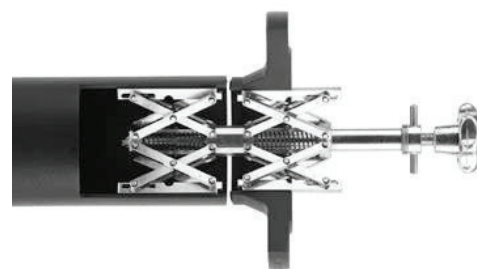
Part No.	Clamping Range (mm)	Weight KG/LBS
MC19	15-19	0.20 / 0.7
MC20	16-20	0.20 / 0.7
MC25	19-25	0.25 / 0.9
MC32	24-32	0.50 / 1
MC40	31-40	0.50 / 1
MC52	38-52	1.25 / 3
MC64	51-64	1.25 / 3



## FTP Clamp

This model has two independent expanding clamps, allowing coaxial alignment of two hollow cylindrical components of different diameters. The bottom expanding clamp is inserted and clamped in the pipe by means of the knob. Then the other part (e.g. a flange) is placed over the top expanding clamp and clamped by means of the hand-bar. Stainless steel options also available.

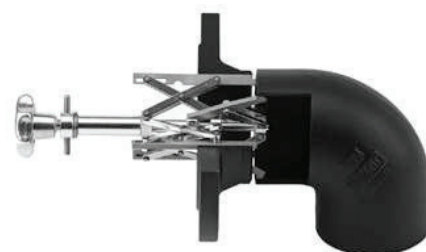
Part No.	Clamping Range (mm)	Weight KG
FTP140	40-140	1.30
FTP220	85-220	3.90
FTP350	75-350	11.50
FTP520	180-520	27.00
FTP940	400-940	39.00



## FTE Clamp

This model with two independent clamps is used for clamping flanges of all kinds and similar parts to elbows and pipe-bends of various diameters. The lower expanding clamp has strong gripping feet which insert into the bend and are tightened by means of the knob. The top expanding clamp is tightened by means of the handbar in the flange. Stainless steel options also available.

Part No.	Clamping Range (mm)	Weight KG/LBS
FTE115	54-115	1 / 3
FTE195	89-195	3.3 / 7
FTE315	120-315	9.5 / 21
FTE520	180-520	23.1 / 51





# External Line Up Clamps

## Cage Clamps

Cage or 'Tipton' Clamps are a cost effective method to align a single size of pipe. Three versions are available; manual, ratchet and hydraulic. These are available in two styles, either "Tack" or "No Tack". The tack type has straight cross bars and is removed from the pipe before welding. The more popular no tack model has arched cross bars to permit a 90% circumferential weld without removing the clamp.

### Manual Cage Clamps - Range : 2-60"

- Will not back off while weld is being made.
- Simple and easy to use.
- Stainless steel versions available

Part No.	Pipe Size	Weight KG
CCM4	4"	8.00
CCM6	6"	14.00
CCM8	8"	15.00
CCM10	10"	23.00
CCM12	12"	24.00
CCM14	14"	30.00
<b>**SMALLER &amp; LARGER SIZES AVAILABLE**</b>		



### Ratchet Cage Clamps - Range : 6-60"

The ratchet type External Line-up Clamp is very strong and accurate, but is also lightweight with either 'standard' flat cross bars or 'no tack' arched cross bars.

- Precision Acme Threads ensure great strength and ease of operation.
- Will not back off while weld is being made.
- Mechanism is enclosed to eliminate dirt or mud.
- Standard 1" ratchet handle fits all sizes.

Part No.	Pipe Size	Weight KG
CCR6	6"	21.00
CCR8	8"	23.00
CCR10	10"	25.00
CCR12	12"	29.00
CCR14	14"	31.00
CCR16	16"	46.00
<b>**SMALLER &amp; LARGER SIZES AVAILABLE**</b>		



### Hydraulic Cage Clamps - Range : 12-80"

- Hydraulic jack capacity 10-12 ton.
- Specials upon request.
- Stainless steel versions available

Part No.	Pipe Size	Weight KG
CCH20	20"	61.00
CCH24	24"	66.00
CCH28	28"	69.00
CCH30	30"	74.00
CCH32	32"	78.00
CCH34	34"	83.00
<b>**SMALLER &amp; LARGER SIZES AVAILABLE**</b>		



# Rim Clamps

## For tough reforming jobs

- From sizes 4"—72"+
- Reform high tensile pipe X45 and above
- For out-of-round conditions up to 2"
- Pivot points are made from stainless steel, one clamp will work for all applications
- Heavy duty latching mechanism
- Hinged flip-up jackbars allow for simple pipe mating and allow for full 360° welding
- Jackscrew Setting Gauge makes initial setup easy
- Torque wrench supplied for accurate reforming pressure



Rim Clamp  
(258)

**Reform pipe  
X45 and above**

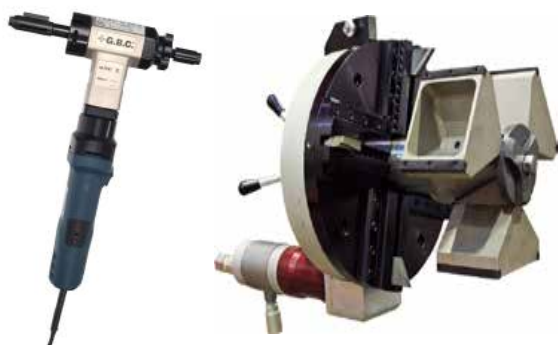
**Hi-lo for  
out-of-round  
conditions  
up to 2"**

Model No.	Description	Est. Shipping Wgt.
258-0406	Rim Clamp 4-6"	Call for dimensions
258-0608	Rim Clamp 6-8	Call for dimensions
258-0810	Rim Clamp 8-10	Call for dimensions
258-1012	Rim Clamp 10-12	280 lbs. 127 kg
258-1420	Rim Clamp 14-20	330 lbs. 149.69 kg
258-2026	Rim Clamp 20-26	360 lbs. 163.30 kg
258-2228	Rim Clamp 22-28	370 lbs. 167.83 kg
258-3036	Rim Clamp 30-36	450 lbs. 204.12 kg
258-3440	Rim Clamp 34-40	475 lbs. 215.45 kg
258-4248	Rim Clamp 42-48	580 lbs. 263.08 kg
258-4450	Rim Clamp 44-50	600 lbs. 272.15 kg
258-4652	Rim Clamp 46-52	760 lbs. 344.73 kg.
258-5056	Rim Clamp 50-56	790 lbs. 358.34 kg
258-6672	Rim Clamp 66-72	885 lbs. 401.43 kg

\*Ultra Rim Clamp 258U available in all above sizes

Rim Clamps are designed for tough reforming jobs. They can reform high tensile pipe X45 and above and out-of-round conditions up to 2". The multiple jackscrews give the operator the ability to apply precise reforming pressure where it is needed most. The hinged flip-up jackbars allow for simple pipe mating and 100% weld and/or grinding without removing the clamp. The clamp comes with a Jackscrew Setting Gauge which saves considerable time and effort in trying to balance the clamp once it's in position.

## We Also Supply



**PIPE BEVELLING MACHINES**



**PIPE CUTTING MACHINES**



**PLATE BEVELLERS**



**PIPE ALIGNMENT CLAMPS**



**PIPE STANDS**



**PIPE PURGING**

# GBC Rental

We are the leading supplier of rental pipework fabrication equipment and we have an unrivalled range and quantity of equipment available off the shelf; from pipe beveling and cutting to tube pulling and expanding, including:

- Pipe and Plate Beveling Machines
- Pipe Cutting Machines
- Pipe Clamps and Stands
- Bundle Pullers
- Tube Expanding Machines
- Rolling Motors for Tube Expanders
- Tube Pulling Machines
- Reciprocating Saws
- Orbital Pipe Saws
- Flange Facing Machines

Our hire fleet is constantly expanding and improving and is offered not only in the UK, but anywhere in the world.

**CALL +44 (0) 1844 201 555 OR EMAIL [HIRE@GBC-UK.COM](mailto:hire@gbc-uk.com)**





- **PEDIGREE - 35+ Years Experience**
- **QUALITY - ISO 9001 Since 1996**
- **PERFORMANCE - Guaranteed**